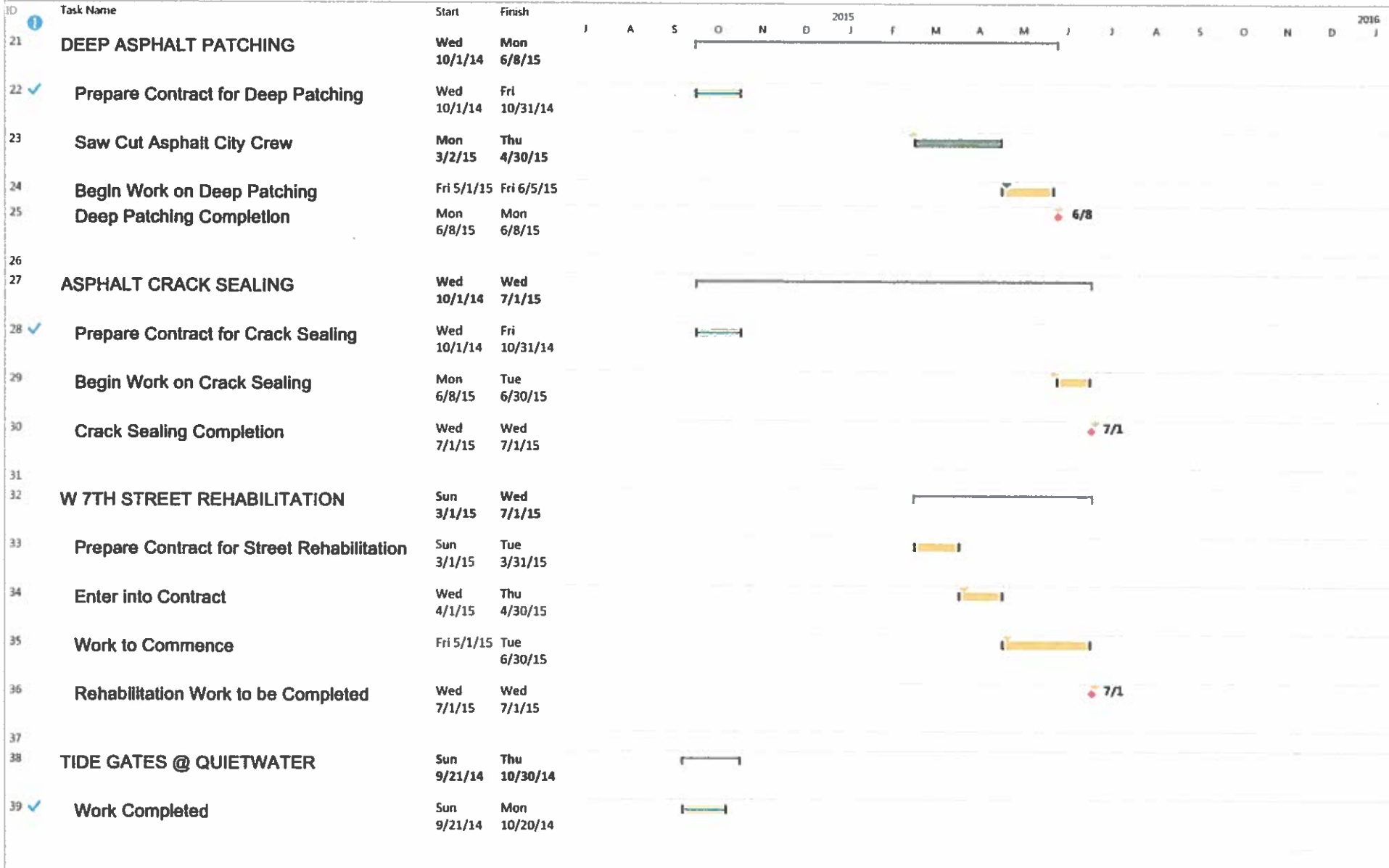


## 2014-2015 CAPITAL IMPROVEMENT SCHEDULE

ID	Task Name	Start	Finish	2015												2016						
				J	A	S	O	N	D	J	F	M	A	M	J	J	A	S	O	N	D	J
1																						
2	<b>EMERGENCY PREPAREDNESS SUPPLIES/EQUIPMENT</b>	Wed 10/1/14	Wed 11/26/14				—	—	—													
3	✓ <b>Cut Asphalt on Radar Road for Power Install</b>	Wed 10/1/14	Fri 10/31/14				—	—														
4	✓ <b>Install Power Conduit @ Crestview Drive</b>	Wed 10/1/14	Fri 10/31/14				—	—														
5	✓ <b>Order /Heater and Dehumidifiers</b>	Sat 11/1/14	Fri 11/14/14					—														
6	✓ <b>Install Power Cable Wire Lights/Power Outlets</b>	Sat 11/1/14	Fri 11/14/14					—														
7	✓ <b>PUD to Power up Emergency Container</b>	Sun 11/2/14	Tue 11/25/14					—														
8	<b>Project Completed</b>	Wed 11/26/14	Wed 11/26/14																			
9																						
10	<b>INFORMATION SERVICES DEVELOPMENT</b>	Wed 7/16/14	Wed 7/16/14																			
11	<b>This information to be filed by PM</b>																					
12																						
13	<b>SOUTH GATEWAY SIGN INSTALLTION</b>	Thu 1/1/15	Mon 6/8/15																			
14	<b>Obtain Design Diagram</b>	Thu 1/1/15	Sat 1/31/15																			
15	<b>Contact Contractor that did the North Gateway</b>	Mon 2/2/15	Wed 3/4/15																			
16	<b>Obtain Blds for Gateway</b>	Thu 3/5/15	Fri 4/3/15																			
17	<b>Contract Gateway Work</b>	Mon 4/6/15	Wed 5/6/15																			
18	<b>Installation of gateway</b>	Thu 5/7/15	Fri 6/5/15																			
19	<b>Gateway Completion Date</b>	Mon 6/8/15	Mon 6/8/15																			
20																						

Project: CapitalProjectsSchedule Date: Thu 12/11/14	Task		Inactive Task	Manual Summary Rollup		External Milestone		Progress	
	Split		Inactive Milestone	Manual Summary		Deadline		Manual Progress	
	Milestone		Inactive Summary	Start-only		Critical			
	Summary		Manual Task	Finish-only		Critical Split			
	Project Summary		Duration-only	External Tasks		Late			

## 2014-2015 CAPITAL IMPROVEMENT SCHEDULE



Project: CapitalProjectsSchedule Date: Thu 12/11/14	Task		Inactive Task	Manual Summary Rollup		External Milestone		Progress	
	Split		Inactive Milestone	Manual Summary		Deadline		Manual Progress	
	Milestone		Inactive Summary	Start-only		Critical			
	Summary		Manual Task	Finish only		Critical Split			
	Project Summary		Duration only	External Tasks		Late			

2014-2015 CAPITAL IMPROVEMENT SCHEDULE

ID	Task Name	Start	Finish	2015												2016						
				J	A	S	O	N	D	J	F	M	A	M	J	J	A	S	O	N	D	J
40	Completion Date	Thu 10/30/14	Thu 10/30/14					10/30														
42	HIGHWAY 101 STREET IMPROVEMENTS	Wed 7/16/14	Wed 7/16/14																			
43	<New Task>																					
44	<New Task>																					
45	<New Task>																					
46	<New Task>																					
47	<New Task>																					
48	<New Task>																					
49	<New Task>																					
51	HIGHWAY 101 DRAINAGE IMPROVEMENTS	Wed 7/16/14	Wed 7/16/14																			
52	<New Task>																					
53	<New Task>																					
54	<New Task>																					
55	<New Task>																					
56	<New Task>																					
57	<New Task>																					
58	<New Task>																					
59	<New Task>																					
61	HIGHWAY 101 WATER IMPROVEMENTS	Thu 1/15/15	Mon 4/13/15																			
62	Final Plans for City Crew Portion of Waterline	Thu 1/15/15	Thu 1/15/15																			
63	Order Material for Water System Installation-City Crew Portion	Fri 1/16/15	Fri 2/6/15																			
64	Pre-Construction Meeting with City Crew	Mon 2/9/15	Mon 2/9/15																			
65	City Crew to Install Waterline	Tue 2/10/15	Fri 4/10/15																			
66	Complete Waterline Installation City Crew	Mon 4/13/15	Mon 4/13/15																			
67	<New Task>																					

Project: CapitalProjectsSchedule Date: Thu 12/11/14	Task		Inactive Task	Manual Summary Rollup		External Milestone		Progress	
	Split		Inactive Milestone	Manual Summary		Deadline		Manual Progress	
	Milestone		Inactive Summary	Start-only		Critical			
	Summary		Manual Task	Finish only		Critical Split			
	Project Summary		Duration-only	External Tasks		Late			

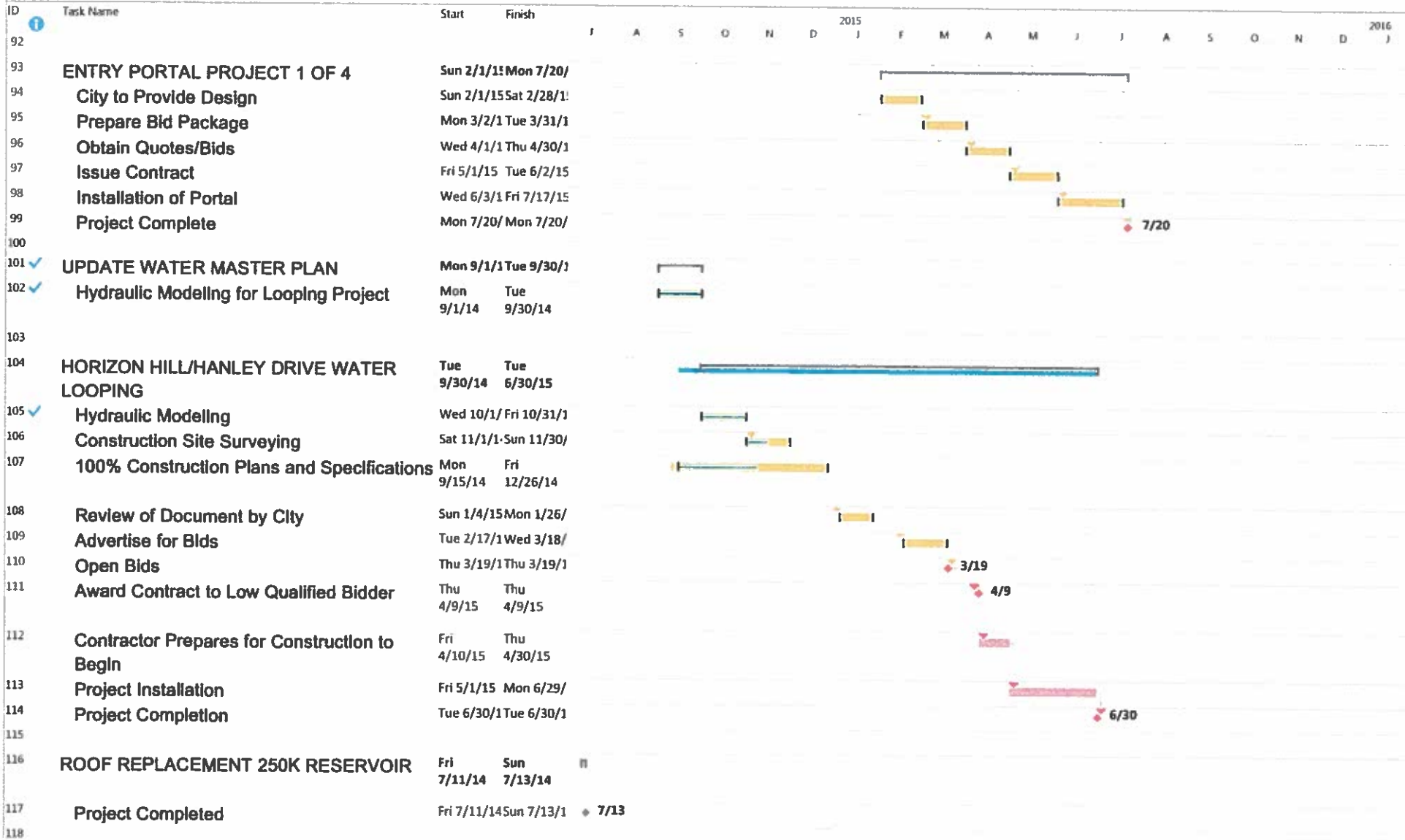
## 2014-2015 CAPITAL IMPROVEMENT SCHEDULE

ID	Task Name	Start	Finish	2015												2016							
				J	A	S	O	N	D	J	F	M	A	M	J	J	A	S	O	N	D	J	
68	<New Task>																						
69	<New Task>																						
70																							
71	<b>HIGHWAY 101 WASTEWATER IMPROVEMENTS</b>	Wed 7/16/14	Wed 7/16/14																				
72	<New Task>																						
73	<New Task>																						
74	<New Task>																						
75	<New Task>																						
76	<New Task>																						
77	<New Task>																						
78	<New Task>																						
79																							
80	<b>SKATE PARK IMPROVEMENTS</b>	Mon 12/1/14	Sat 1/31/15																				
81	Parks / Commons Commission describe Project	Mon 12/1/14	Sat 1/31/15																				
82	Take Request to Parks and Commons	Thu 1/15/15	Thu 1/15/15																				
83																							
84	<b>LIBRARY UNIDENTIFIED PROJECTS</b>	Thu 1/1/15	Tue 3/3/15																				
85	Library Commission Describe Projects	Thu 1/1/15	Sat 1/31/15																				
86	Take Request to Library Commission	Tue 3/3/15	Tue 3/3/15																				
87																							
88	<b>LABYRINTH IMPROVEMENTS</b>	Thu 1/1/15	Sat 1/31/15																				
89	Parks and Commons Determine Design	Thu 1/1/15	Sat 1/31/15																				
90	Take Request to Parks and Commons	Thu 1/15/15	Thu 1/15/15																				
91																							

Project: CapitalProjectsSchedule  
Date: Thu 12/11/14

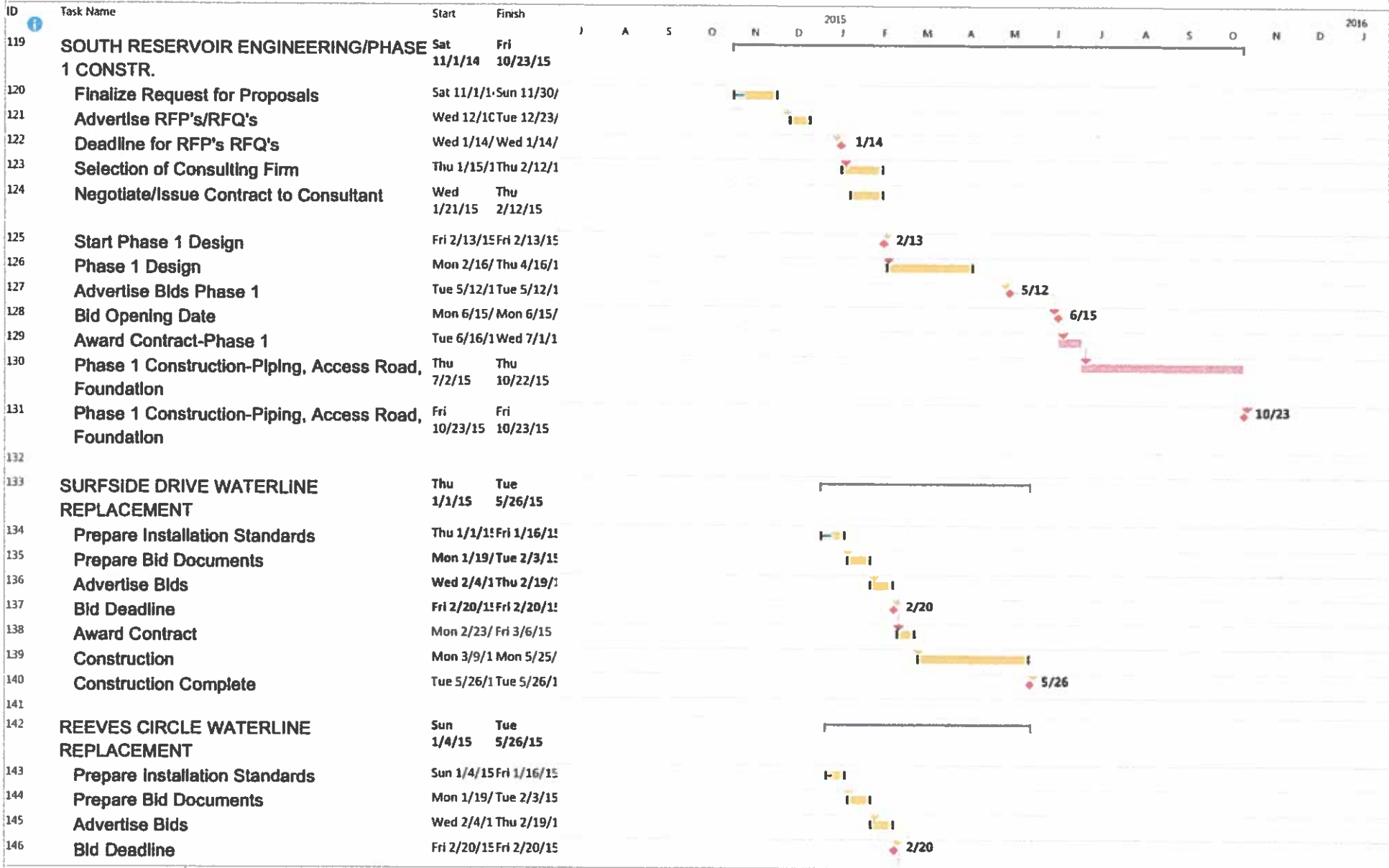
<b>Task</b>		Inactive Task		Manual Summary Rolup		External Milestone		Progress
<b>Split</b>		Inactive Milestone		<b>Manual Summary</b>		<b>Deadline</b>		<b>Manual Progress</b>
<b>Milestone</b>		Inactive Summary		<b>Start-only</b>		<b>Critical</b>		
<b>Summary</b>		<b>Manual Task</b>		<b>Finish only</b>		<b>Critical Split</b>		
<b>Project Summary</b>		<b>Duration only</b>		<b>External Tasks</b>		<b>Late</b>		

## 2014-2015 CAPITAL IMPROVEMENT SCHEDULE



Project: CapitalProjectsSchedule Date: Thu 12/11/14	Task		Inactive Task	Manual Summary Rollup		External Milestone		Progress	
	Split		Inactive Milestone	Manual Summary		Deadline		Manual Progress	
	Milestone		Inactive Summary	Start only		Critical			
	Summary		Manual Task	Finish only		Critical Split			
	Project Summary		Duration-only	External Tasks		Late			

## 2014-2015 CAPITAL IMPROVEMENT SCHEDULE



Project: CapitalProjectsSchedule Date: Thu 12/11/14	Task		Inactive Task	Manual Summary Rollup		External Milestone		Progress	
	Split		Inactive Milestone	Manual Summary		Deadline		Manual Progress	
	Milestone		Inactive Summary	Start only		Critical			
	Summary		Manual Task	Finish only		Critical Split			
	Project Summary		Duration only	External Tasks		Late			

### 2014-2015 CAPITAL IMPROVEMENT SCHEDULE



Project: CapitalProjectsSchedule Date: Thu 12/11/14	Task		Inactive Task	Manual Summary Rollup		External Milestone		Progress	
	Split		Inactive Milestone	Manual Summary		Deadline		Manual Progress	
	Milestone		Inactive Summary	Start-only		Critical			
	Summary		Manual Task	Finish-only		Critical Split			
	Project Summary		Duration only	External Tasks		Late			

## 2014-2015 CAPITAL IMPROVEMENT SCHEDULE

ID	Task Name	Start	Finish	2015												2016							
				J	A	S	O	N	D	J	F	M	A	M	J	J	A	S	O	N	D	J	
177 ✓	Obtain Quotes for Grading Site	Fri 11/14/14	Fri 11/21/14						H														
178 ✓	Award Contract for Site Grading/East Wall	Fri 11/21/14	Wed 11/26/14						H														
179	Construction Site Grading/Wall	Wed 11/26/14	Wed 12/31/14							I													
180	Playground Grading Complete	Fri 1/2/15	Fri 1/2/15																				
181																							
182	Fire Hydrant Replacement	Wed 7/16/14	Wed 7/16/14																				
183	<New Task>																						
184	<New Task>																						
185	<New Task>																						
186	<New Task>																						
187	<New Task>																						
188	<New Task>																						
189	<New Task>																						
190	<New Task>																						
191																							
192	Infiltration/Inflow Repair																						
193																							
194																							
195																							
196																							
197	Little Log Church Siding																						

Project: CapitalProjectsSchedule Date: Thu 12/11/14	Task		Inactive Task	Manual Summary Rollup		External Milestone		Progress	
	Split		Inactive Milestone	Manual Summary		Deadline		Manual Progress	
	Milestone		Inactive Summary	Start only		Critical			
	Summary		Manual Task		Finish only		Critical Split		
	Project Summary		Duration only		External Tasks		Late		